

# **Legislative-Executive WorkFirst Poverty Reduction Oversight (LEWPRO) Task Force**

**November 7, 2024  
9:00 am – 12:00 pm**





# Mutual Expectations

- **Maintain a respectful body language, tone, and volume when sharing our opinions**
- **Value the many different sources of knowledge; listening to the entire message without editorializing or interrupting**
- **Act in ways that edify the group's self-esteem**
- **Seek first to understand before being understood**
- **Be honest and explain why**
- **Always assume good intentions; give people the benefit of the doubt**
- **Look for places to agree, connect, and support – it helps us get to better solutions**
- **Make it a safe environment to share – no personal attacks**
- **Listen to the entire message, literally, and mentally:**
  - **(a) don't interrupt – we are modeling respectful behavior; and**
  - **(b) our listening implies that we care, even if we don't agree**



# Meeting Goals

- Hear from the Community and the public
- Review and vote on Economic Justice Alliance Options
- Understand what's happening around the Economic Justice Alliance and poverty reduction work around the state
- Review TANF Performance Measures & understand how congressional action may impact the TANF Program
- Discuss and brainstorm next steps for the Task Force

# Housekeeping



## Task Force Members

- Designated as “panelists” and will have the ability to participate
- All other attendees are muted
- Please use your reaction/hand raise buttons to ask questions, speak and vote
- Staff will count hands to determine outcome of votes



## Public Attendees

- Chat function is turned off
- If you have questions during the meeting, please use the Q&A function
- Q&A should not be used for comments or discussion
- Request to participate during 2 public comment periods by using the “raised hand” feature
- When it is your turn to speak, you will be “promoted” to panelist

# Your Team - Behind the Scenes

- Facilitator: Alex Panagotacos, Director Strategic Partnerships
- Lori Pfingst, Senior Director
- Livey Beha, Senior Program Manager
- Gwen Teok, Senior Research & Policy Analyst
- Babs Roberts, Senior Advisor
- ASL Interpreting services provided by **All Hands Community Interpreting Services**

# Welcome & Introductions

Presented by:

- Representative Mia Gregerson, 33rd Legislative District
- Secretary Jilma Meneses, Department of Social & Health Services

Welcome to new members:

- Andrea "Dre" Carrillo - Washington State Women's Commission
- Lisa Keating - LGBTQ Commission

# Consent Agenda

Presented by:

Secretary Jilma Meneses, Department of Social & Health Services

Items for Approval:

- November Meeting Agenda
- August Meeting Minutes
- TANF Spending plan report

# Public Comment

Listening





# Aligned Poverty Efforts & LEWPRO

Decision



# LEWPRO Alignment with Economic Justice Alliance - Recap Themes

## Meaning

- Reporting & Accountability
- Connecting to Priority areas
- Organized Action

## Role

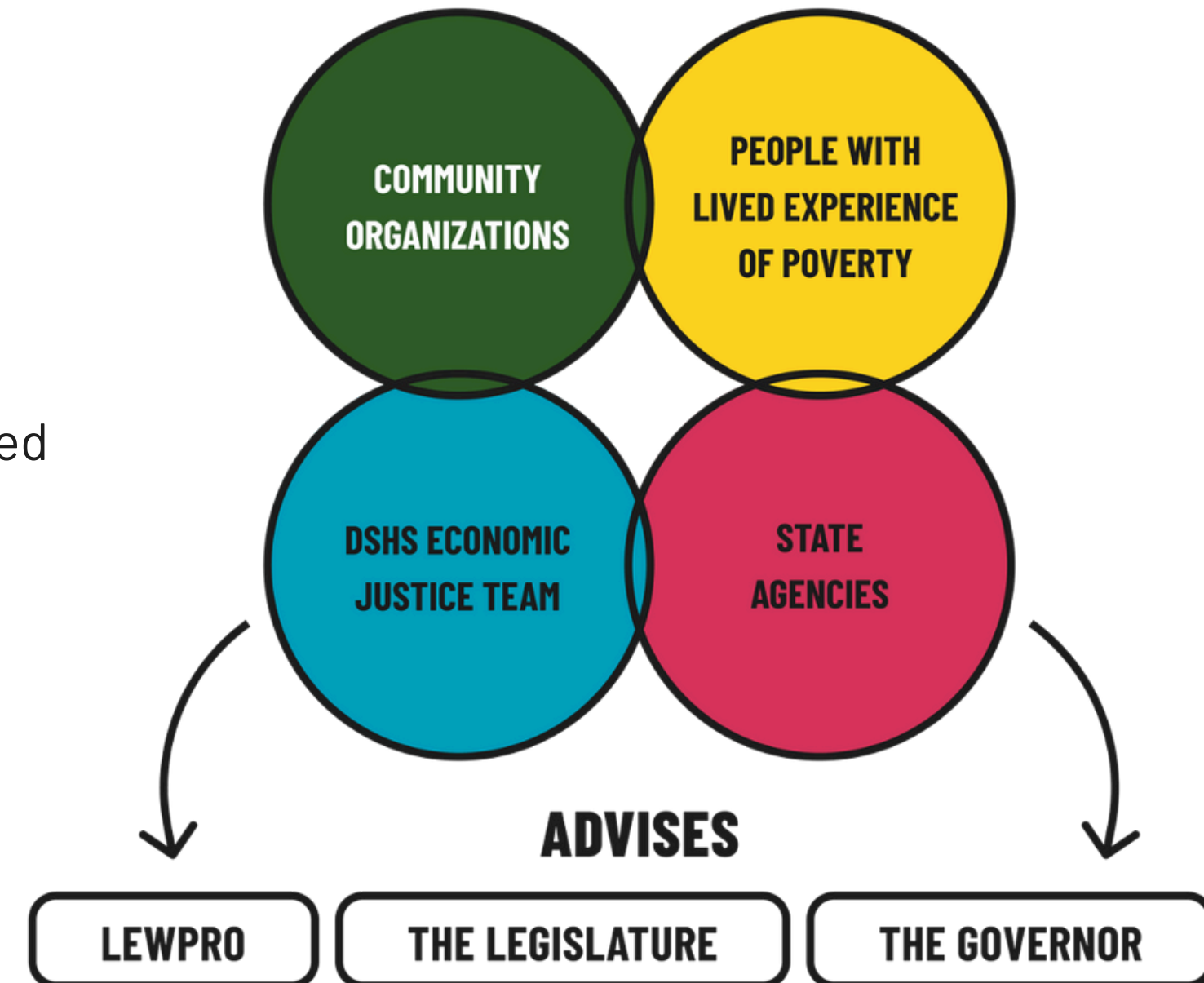
- Support Accountability
- Amplify Voice
- Participate & Engage
- Legislative Agenda
- Activate Agency Leadership

## Alignment

- Center around the plan
- Intentional Alignment
- Relationships & Center Lived Experience
- Shared Vision

## Meetings

- Clear Process
- Connection
- Center Equity
- Restructure to support
- Action



# LEWPRO Alignment with Economic Justice Alliance - Recap Options

## Full Alignment

- Revise the statute to support alignment and update language
- Restructure Meeting format - information & action focus
- Develop annual agenda / priorities

## Status Quo

- Make no formal changes

## Alignment within existing structure

- No / limited statute revision
- Restructure meeting format - information & action focus
- Develop annual agenda / priorities

# Economic Justice Alliance

Update - Discussion - Requests





WASHINGTON  
ECONOMIC  
JUSTICE  
ALLIANCE

## Vision

We envision a Washington free of poverty and full of abundant opportunity, where everyone can experience joy, belonging and well-being.

## Mission

The Alliance's mission is to advance policy, program and funding changes that ensure every Washingtonian can meet their basic needs, fully contribute their talents, and pass well-being on to future generations.

## Centering Experts with Experience in the 10-Year Plan



<https://youtu.be/j9A0-6pMI2Q>



# 10-Year Plan 3-Year Impact Report

270

**policy, program or  
funding actions taken by  
alliance partners**

*national best  
practice*

**according to Harvard,  
Ascend @ Aspen  
Institute and the  
American Public Human  
Services Association**

10th

**lowest poverty rate in  
the country**

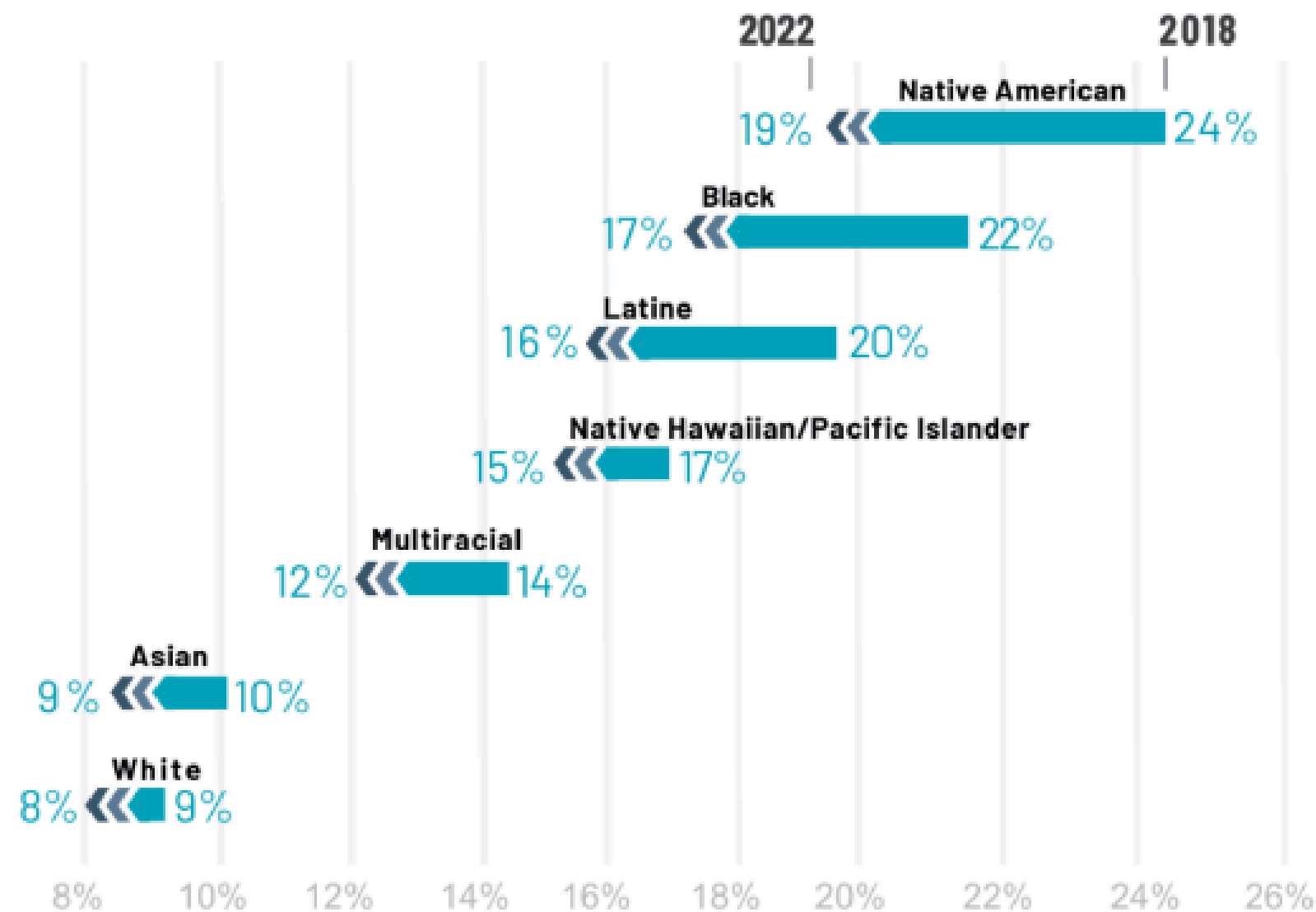
<https://waeconomicjusticealliance.com/impact-report/>

# 3-Year Impact Report

## CHANGE IN OFFICIAL POVERTY RATE BY RACE & ETHNICITY

Washington State 2018-2022

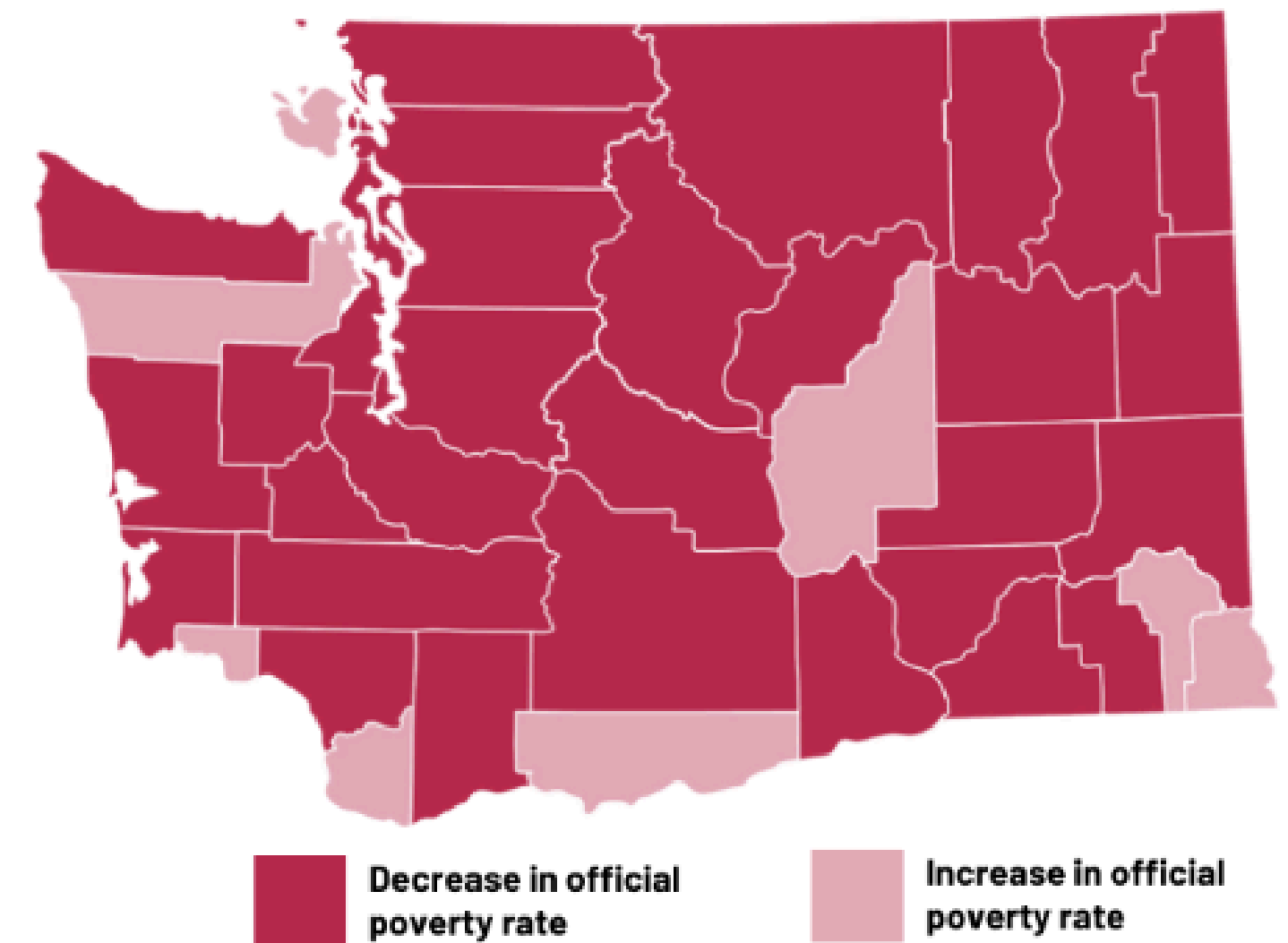
Every racial and ethnic group in Washington state experienced a decrease in the official poverty rate between 2018 and 2022, with accelerated declines among people of color.<sup>1</sup>



## CHANGE IN OFFICIAL POVERTY RATE BY COUNTY

Washington State 2018-2022

31 of the 39 counties in Washington experienced a decline in poverty rates between 2018 and 2022.<sup>1</sup>





# 3-Year Impact Report - Highlights



## Strategy 3

Closing the Homeownership Gap

Working Families Tax Credit

Community Reinvestment Fund



## Strategy 6 & 8

Direct Cash Pilots

Economic Security for All

## Strategy 2

Compensation for Lived Experience

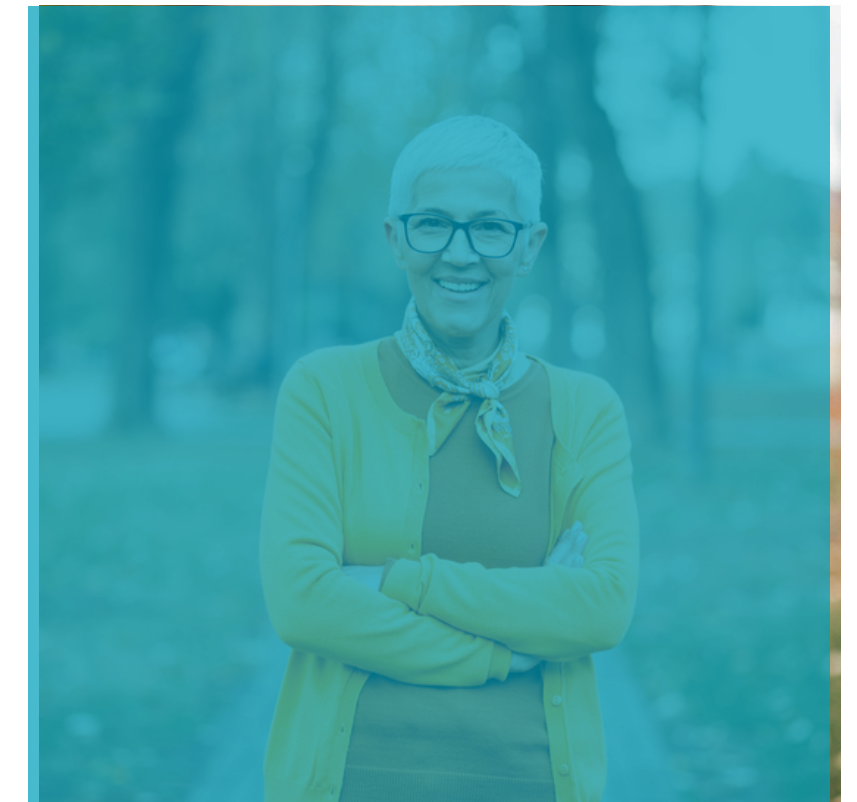


## Strategy 5 & 6

Integrated Eligibility & Enrollment

DOL2Go

Increased Access to Fresh Produce



# 3-Year Impact Report - Community



**Innovating how local communities  
respond to the refugee crisis in  
America**

**Thrive International**

# Economic Justice Team Visits Thrive International in Spokane

**THRIVE**  
INTERNATIONAL



# **3-Year Impact Report - Community**

## **Community Assemblies**

**Presented by:**

- **Faduma Fido, Lab Leader @ People's Economy Lab**

# Advisory Council Update

## New Identity

From Poverty Reduction  
Workgroup to EJA  
Advisory Council

## Steering Committee leadership

New pathways  
Continued leadership

## Mission Alignment

Adopt Economic Justice  
Mission and Vision

## Charter Development

Formalized structure  
and decision making

## Membership

Refining membership -  
focusing on community  
& lived experts

## Subcommittees

Finalizing Charter and  
membership  
development work

**Continuing to Serve as LEWPRO's Advisory body**

# TANF Performance Measures

Information - Discussion



# TANF WORKFIRST PERFORMANCE MEASURES

Presented by:

- Lisa Nicoli, Senior Research Project Manager, Economic Services Administration
- <https://www.dshs.wa.gov/esa/workfirst-performance-measures>

WorkFirst assists TANF recipients to stabilize, meet their job readiness goals, and provide well-being for their families.

DSHS is required to develop and publish outcome measures for the entire WorkFirst system as well as for local community and partner agencies.

These measures are available each quarter to assist program staff, administrators, and partners in managing program performance.

# Impact of the Fiscal Responsibility Act on TANF

Information - Discussion







# Proposed Federal TANF Rules

Economic Services Administration  
Nov. 7, 2024

# Fiscal Responsibility Act

## June 3, 2023 ([H.R.3746](#))

- New work and education-related outcome measures.
- Recalibration of base year for caseload reduction credit from 2005 to 2015.
- \$35 minimum for small payments to working parents included in a state's Work Participation Rate.
- Optional six-year pilot.

# Fiscal Responsibility Act Work and Education Outcome Measures

- Employment Rate – Second quarter after exit.
- Employment Retention Rate – Fourth quarter after exit.
- Median Earnings – Second quarter after exit.
- Secondary School Diploma or Its Recognized Equivalent (Secondary School Attainment).

# Fiscal Responsibility Act

Implementation  
Timeline



<b>Interim Final Rule</b>	<b>Work Outcome Measures</b>	<b>Change to Small Payments</b>	<b>Caseload Reduction Credit Change</b>	<b>Education Outcome Measure</b>
Comments due on <a href="#">Interim Final Rule</a>	Q1 data collection due  States will submit SSNs of individuals who meet criteria	WFS must increase to \$35/month for Work Participation Rate	Base year recalibration from 2005 to 2015  Work Participation Rate impacts	First yearly education data collection due  FY 2024/25 Data
Rule only covers Work and Education Outcome Measures				
<b>Dec. 26, 2024</b>	<b>May 15, 2025</b>	<b>Oct. 1, 2025</b>	<b>Oct. 1, 2025</b>	<b>Nov. 14, 2027</b>

# Notice of Proposed Rule Making

## [Oct. 2, 2023](#)

- Proposed rule requires state TANF program offerings and budget allocations to align with four TANF purposes.
- Limits state flexibility in spending federal TANF and claiming state Maintenance of Effort (referenced to as MOE).

# Notice of Proposed Rule Making

## Key Components

- “Reasonable person” standard to determine if TANF purposes are met.
- Ceiling on “needy” - under 200% FPL.
- Excluding non-governmental, third-party MOE.

# Notice of Proposed Rule Making

## Key Dates

- Dec. 1, 2023 - DSHS submitted feedback to federal partners.
- December 2024 - earliest date rule could go into effect.



Thank you!

[Melissa.Kenney@dshs.wa.gov](mailto:Melissa.Kenney@dshs.wa.gov)

[Kirsten.Pochop@dshs.wa.gov](mailto:Kirsten.Pochop@dshs.wa.gov)



# LEWPRO NEXT STEPS

Discussion



# Brainstorming Next Steps

Miro Board Exercise Questions



**What should we be thinking about in building priorities?**

**How should we approach structuring the Task Force priority development process?**

**What do you need to support alignment?**

**Should we consider changing the meeting cadence?**

**What Else?**



# Public Comment

Listening



# Good of the Order

Closing





**Thank you.**

